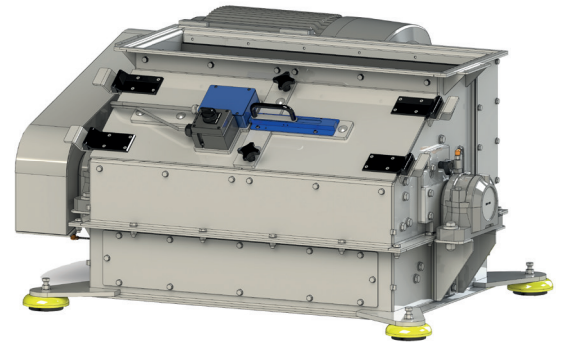


## CRUSHER SERIES CR

## YOUR TOOL FOR THE TOUGH JOBS

The CR crusher is a multi-purpose machine for the coarse crushing of bulk materials. This machine is suitable for crushing agglomerates, for example, or for pre-crushing coarse pieces of material for further grinding. This means that large pellets can be pre-crushed, for instance. This protects the hammer mill screens.

The housing is especially sturdy and features a replaceable Hardox baffle plate. The rotor is equipped with Hardox beaters spread over three axles and mounted on both sides. The drive is provided by a three-phase motor mounted on the side via a belt drive. The machine can be installed as a stand-alone unit or be integrated into a grinding system.



### TECHNICAL DETAILS

- Strong welded-steel construction with symmetric design
- Replaceable Hardox 450 impact plate, easy to change
- Solid 15 mm beater made of Hardox 450
- Generously dimensioned inlet for coarse pieces of material
- Long-life rotor in special design
- Easy access to the grinding chamber through hinged doors with door locking and standstill monitoring
- 3 sieve segments, easy and quick to change segment by segment
- Three-phase motor attached to the side of the housing
- Belt drive with protective cover
- 3 temperature sensors for monitoring the storage and interior temperature
- Tested and certified in a shock-resistant and flame escape proof design up to 0.4 bar
- Grist spectrum can be varied by different sieve perforations

Maschinentypen	CR 900
Arbeitsbreite	870 mm
Maße und Gewichte	
Länge (ca.)	1305 mm
Breite (ca.)	1310 mm
Höhe (ca.)	650 mm
Gewicht inkl. Motor	670 kg
Antrieb 1500 1/min 50 Hz (1800 1/min 60 Hz)	
Leistung	30 kW

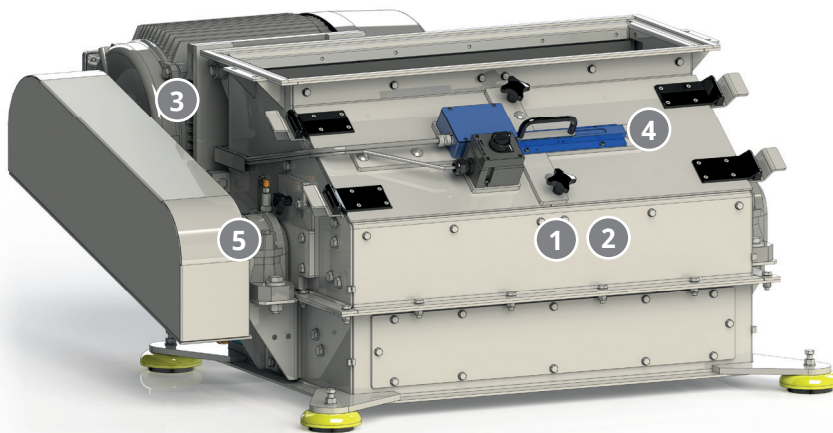
ATEX category:  
II 3 D

Pressure shock  
resistance:  
0.4 bar

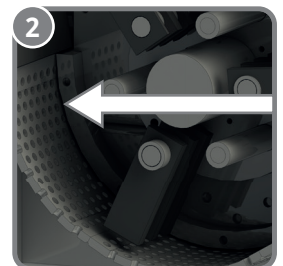
## STANDARD SUPPLY AND OPTIONS

### STANDARD SCOPE OF SUPPLY:

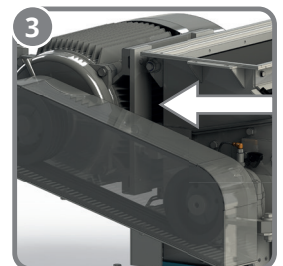
- Supporting frame
- Multi-layer coating: colour RAL 9001 (cream)
- Pressure shock-resistant 0.4 bar and flame escape proof design
- Automatic door-locking system with stand still monitor
- Belt drive with protective cover
- Vibration dampers, height adjustable
- Inlet and outlet flange
- Bearing and interior temperature monitoring
- Electrical components pre-wired into terminal boxes
- 30 kW Drive motor B3 with integrated PTC sensors
- ATEX version according to zone 21 inside and zone 22 outside (II 2/3 D)
- 1 set of beaters fitted on beater frames
- 3 sieve segments, ready mounted
- 1 set of special tools



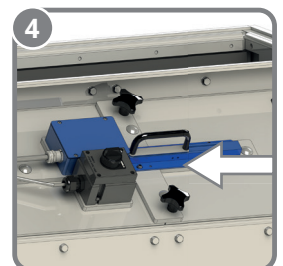
Rotor with Hardox bats



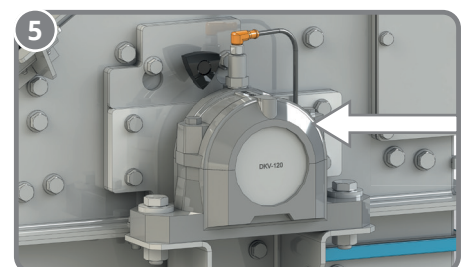
Multi-piece sieve insert



Three-phase motor with belt drive



Door-locking system with stand still monitor



Temperature monitoring of storage and interior