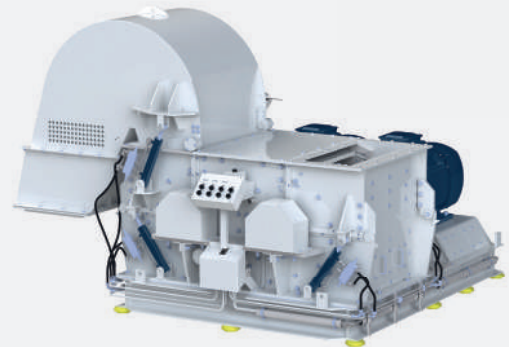


Separation of Organic Waste from Packaging and Foreign Matter

DEPACKAGING MACHINE DRM

The depackaging machine DRM is specially designed for the reliable separation of the biogenic fraction from foreign or unwanted materials (e.g. packaging) from different types of biowaste (e.g. food waste). The special design enables a high separation performance with minimal energy input.



Your Advantages

Efficient Material Separation

- Reliable separation of organics and inorganics
- Double rotor principle enables a high dry matter content and reduces the addition of liquid
- Rotational speed of the rotors can be independently adjusted to the material by means of a frequency converter

Reliable Operation and Long Durability

- Robust welded-screw construction made of stainless steel for continuous industrial operation (24/7)
- Beaters made of wear-resistant cast material for high mechanical loads
- Impact bars to protect the housing, individually replaceable

High Availability with Low Downtimes

- Upper housing can be opened hydraulically in two segments for maintenance or in the event of a malfunction, each independently of the other
- Screens divided into 2 x 4 segments, individually replaceable depending on wear and tear
- High tolerance to impurities

High Safety of Personnel and Plant

- Sensors for monitoring bearing temperatures
- Sensors for monitoring the rotor speed
- Control panel for the hydraulics with two-hand operation

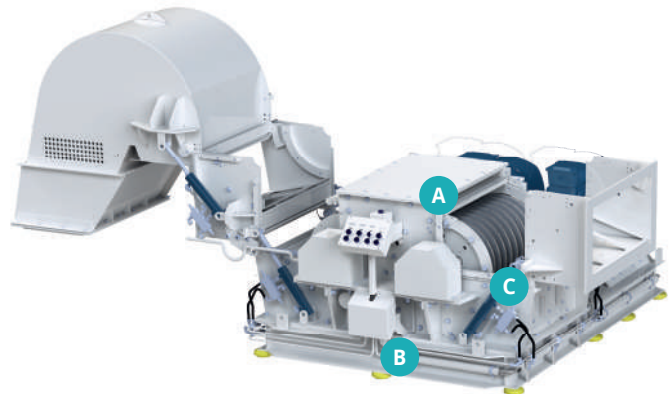
Technical Details

Type	DRM 800
Throughput capacity (t/h)	up to 25
Drive motor (kW)	2 x 55 or 2 x 75
Speed (rpm)	1200 - 1500
Impact area (m ²)	0.8
Screen area (m ²)	1.3
Dimensions and Weight	
Working width (mm)	800
Length x width x height (approx. mm)	2570 x 2835 x 1930
Weight (approx. kg)	4500
Hydraulic System	
Drive motor (approx. kW)	0.95
Oil filling quantity (l)	7

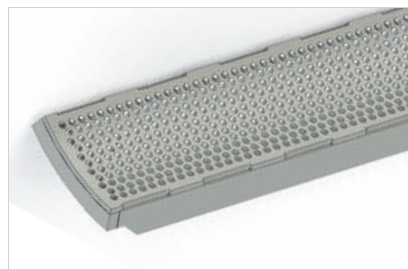
Standard Supply and Options

Standard Scope of Supply:

- Stainless steel parts pickled and passivated
- Flexible cam coupling (N-EUPEX) with coupling guard
- Vibration dampers, height adjustable
- Hydraulic power unit and control unit with control panel on the machine
- Electrical components completely wired to terminal boxes
- Two pieces drive motors B3
- Sensors for bearing temperature monitoring
- Sensors for speed monitoring
- 1 set of beaters, ready mounted
- 1 set of screens, ready mounted
- 1 set of special tools
- Connections for the addition of liquids



A Operating principle DRM



B Wear-resistant screen segment



C Robust rotor design with cast material beaters

Organic Waste Treatment Plant as an Individual System Solution

According to your needs we integrate our depackaging machine DRM into a complete processing plant:

- Receiving bunker for truck unloading or with tipping station for waste bins
- Container washing machine
- Screw discharge floor
- Screw conveyors
- Tietjen screw press PRS
- Pumps, tank and pipe construction
- Hygienisation
- Steel construction
- Process control

