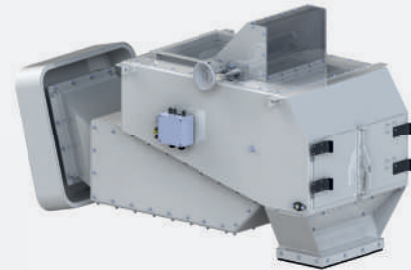


Optimal Feeding of Bulk Materials of All Kinds

VIBRATION FEEDER R

The vibration feeder R is suitable for feeding the hammer mill with free-flowing bulk materials. For this purpose, a trough is brought into vibration by a magnetic vibrator. At the same time, it serves to supply the hammer mill with the aspiration air.

An extra-strong permanent magnet at the end of the trough, which can be swung out for cleaning, separates magnetic foreign bodies.



Your Advantages

Precise feeding and separation of magnetic foreign bodies

- Load-dependent feeding of the hammer mill with a thyristor control
- Extra strong permanent magnet for the separation of magnetic foreign bodies
- Slide to adjust the product layer height (manually or optionally electronically adjustable)

Reliable Operation and Long Service Life

- Robust welded steel construction for continuous industrial operation (24/7)
- Fully dust-tight closed housing

High Availability

- Avoidance of mill downtimes in case of damage by foreign bodies
- Easy access for cleaning and maintenance through maintenance opening
- Magnet can be swung out for cleaning

High Safety of Personnel and Plant

- Pressure shock resistant and flameproof design (0.4 bar)
- ATEX design according to zone 22 (II 3 D) inside and 22 (II 3 D) outside optionally possible

Technical Details

Type	R 200	R 300	R 400	R 500	R 650	R 900
Throughput capacity at 0.6 t/m ³ (t/h)	5	8	18	35	55	75
Throughput (m ³ /h)	8	13	30	58	90	125
Dimensions and Weight						
Working width (mm)	200	300	400	500	650	900
Installation height (mm)	430	525	910	970	970	970
Width (mm)	335	455	630	810	960	1210
Length (mm)	730	930	1220	1400	1560	1530
Weight (kg)	150	190	330	410	460	510
Magnetic drive						
Power (A)	0.85	2.2	4.8	7	8	8.5
Voltage (V)	230	230	230	230	400	400

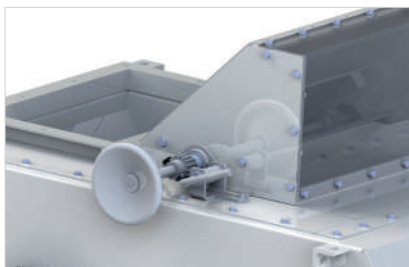
Standard Supply and Options

Standard Scope of Supply:

- Pressure shock resistant up to 0.4 bar and flameproof
- Permanent magnet can be swung out for cleaning
- Manual slide to adjust the product layer height
- Large maintenance and cleaning opening
- Air inlet with sound absorbing cover
- Multi-layer coating

Option:

- Aspiration air valve A-Vent for explosion isolation of the inlet for the aspiration air: If a dust explosion inside the hammer mill occurs, the A-Vent closes and isolates against the ambient
- ATEX design according to zone 22 (II 3 D) inside and zone 22 (II 3 D) outside
- Electronically controlled slide to adjust the product layer height
- Thyristor control for regulating the throughput



A Manual slide to adjust the product layer



B Electronically controlled slide to adjust the product layer (option)



C Swing out magnet



D Aspiration air valve A-Vent for explosion isolation (option)