

Optimum Product Feeding for Grinding

SCREW FEEDER TTS & TRS

The screw feeder is suitable for conveying and load-dependent feeding of free-flowing bulk materials to the hammer mill. A reduced thread in the inlet and a double thread in the outlet ensure an optimal and continuous product flow. The trough is designed either as an U-through (TTS) or as a pipe (TRS).



Your Advantages

Effective Feeding of the Hammer Mill

- Precise, Load-dependent feeding of the hammer mill in combination with a controlled frequency converter
- Intake thread with reduced pitch for better discharge of the material from a pre-hopper
- Double thread in the outlet area with scrapers to equalise the product flow onto the mill
- Standard trough length 2000 mm
- 4 different screw diameters
- Design as single, twin, or triple screw
- Adaptable to the individual installation situation: special designs possible (diameter, thread design, number of troughs, length, arrangement, drive, wear protection)

Reliable Operation and Long Durability

- Robust welded steel construction for continuous industrial operation (24/7)
- Continuously welded screw thread on both sides
- Double Simmerring seal on both sides

High Safety of Personnel and Plant

- Pressure shock resistant and flameproof design (0.4 bar) optionally possible
- ATEX design according to zone 21 (II 2 D) inside and zone 22 (II 3 D) outside optionally possible

Technical Details

Type	TTS 170 TRS 170	TTS 220 TRS 220	TTS 2170 TRS 2170	TTS 2220 TRS 2220	TTS 2270 TRS 2270	TTS 2320 TRS 2320	TTS 3170 TRS 3170	TTS 3320 TRS 3320
Screw diameter (mm)	150	200	150	200	250	300	150	300
Number of screws/troughs	1	1	2	2	2	2	3	3
Max. capacity at 0.65 t/m ³ (t/h)	5	10	10	20	37	60	19	86
Dimensions								
Trough width (mm)	170	220	2 x 170	2 x 220	2 x 270	2 x 320	3 x 170	3 x 320
Standard trough length (mm)	2000	2000	2000	2000	2000	2000	2000	2000
Drive								
Number of gear motor(s)	1	1	2	2	2	2	3	3
Motor size (kW)	1.5	1.5 - 3	1.5	1.5 - 3	2.2 - 3	4	1.5	3

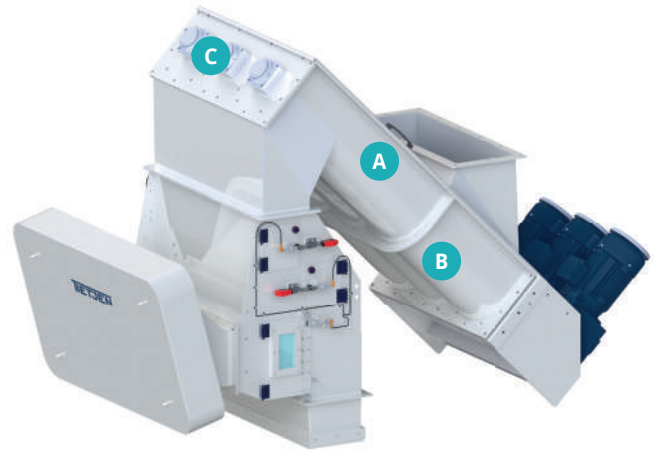
Standard Supply and Options

Standard Scope of Supply:

- Spur gear motor(s) with integrated PTC thermistor sensors
- Flexible coupling
- Double Simmerring seal
- Continuously welded screw thread on both sides
- Multi-layer coating

Option:

- ATEX design according to zone 21 (II 2 D) inside and zone 22 (II 3 D) outside
- Pressure shock resistant up to 0.4 bar and flameproof
- Cooling fan for gear motor(s)
- Sensor for overflow protection
- Sensor for rotation monitoring



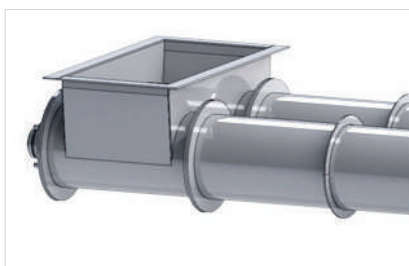
Inclined triple screw feeder in special design with bevel gear motors and foreign body separator AGS



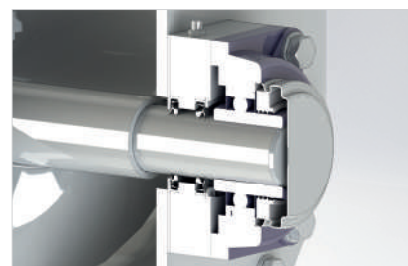
A Screw thread welded on both sides



B U-trough design (TTS)



B Pipe trough design (TRS)



C Shaft with double Simmerring-seal